





Map Updated: Thursday, July 6, 2023. This information submitted is not guaranteed. Although obtained from reliable sources, all information should be confirmed prior to use or reliance upon the information. This document may not be reproduced in whole or in part without the express written consent of NAI Avant.



Map Updated: Thursday, July 6, 2023. This information submitted is not guaranteed. Although obtained from reliable sources, all information should be confirmed prior to use or reliance upon the information. This document may not be reproduced in whole or in part without the express written consent of NAI Avant.



Map Updated: Thursday, July 6, 2023. This information submitted is not guaranteed. Although obtained from reliable sources, all information should be confirmed prior to use or reliance upon the information. This document may not be reproduced in whole or in part without the express written consent of NAI Avant.



**SPECIAL FLOOD HAZARD AREAS**

- 1% Annual Chance Flood Hazard  
Zone A, AE, A99, A10, AH, AR, X, VE
- Regulatory Floodway

**OTHER AREAS OF FLOOD HAZARD**

- 0.2% Annual Chance Flood Hazard  
Zone X
- Future Conditions 1% Annual Chance Flood Hazard  
Zone X
- Area with Reduced Flood Risk due to Levee  
Zone X
- NO SCREEN  
Areas Outside the 0.2% Annual Chance Floodplain  
Zone X
- Areas of Undetermined Flood Hazard  
Zone D

**CROSS SECTIONS & BFES**

- 16.2  
17.5  
Cross Sections with 1% Annual Chance (Water Surface Elevation)
- Coastal Transect
- Coastal Transect Baseline
- Profile Baseline
- Base Flood Elevation

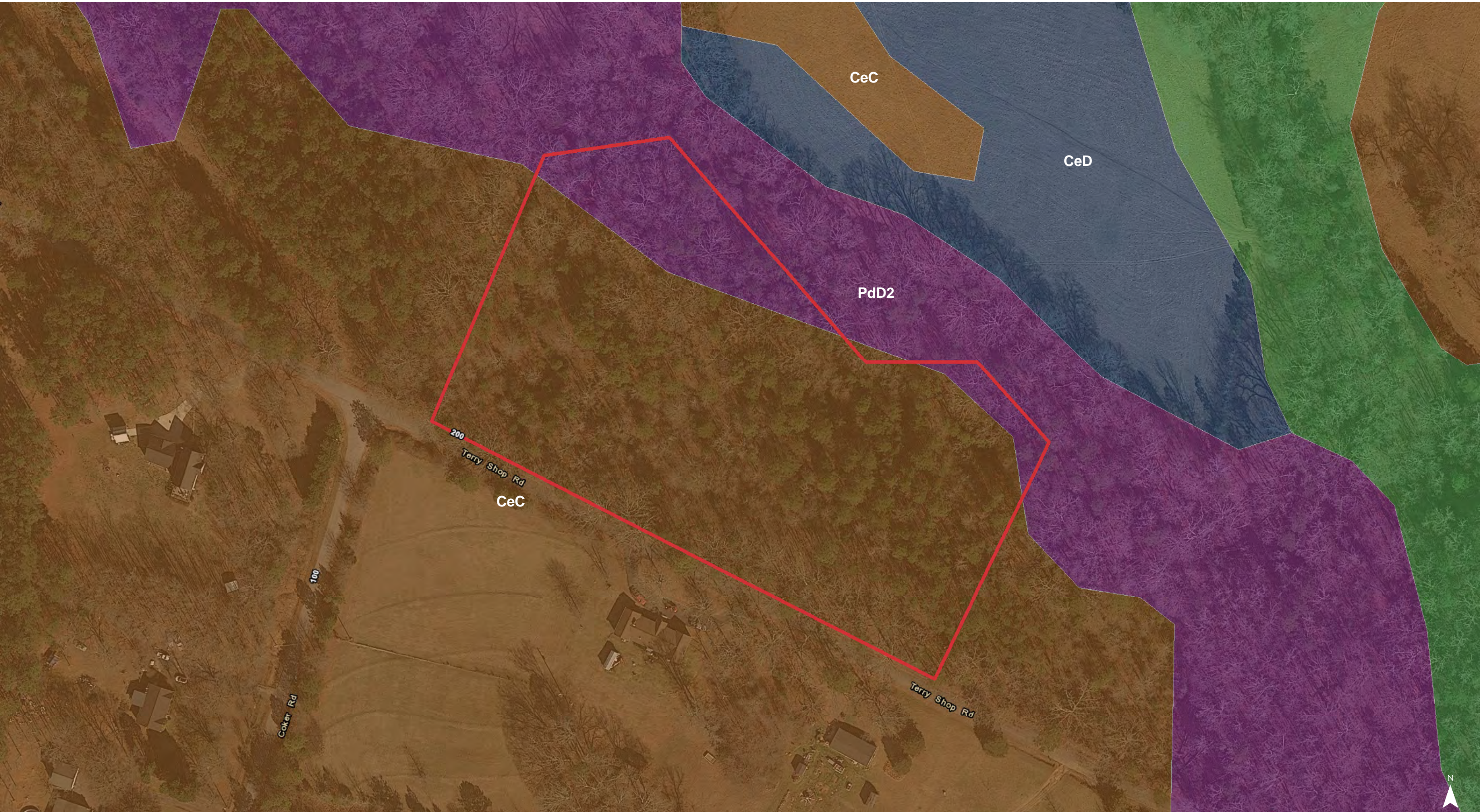
Map Updated: Thursday, July 6, 2023. This information submitted is not guaranteed. Although obtained from reliable sources, all information should be confirmed prior to use or reliance upon the information. This document may not be reproduced in whole or in part without the express written consent of NAI Avant.



### National Wetlands Inventory

- Estuarine and Marine Deepwater
- Estuarine and Marine Wetland
- Freshwater Emergent Wetland
- Freshwater Forested/Shrub Wetland
- Freshwater Pond
- Lake
- Riverine

Map Updated: Thursday, July 6, 2023. This information submitted is not guaranteed. Although obtained from reliable sources, all information should be confirmed prior to use or reliance upon the information. This document may not be reproduced in whole or in part without the express written consent of NAI Avant.



Map Updated: Thursday, July 6, 2023. This information submitted is not guaranteed. Although obtained from reliable sources, all information should be confirmed prior to use or reliance upon the information. This document may not be reproduced in whole or in part without the express written consent of NAI Avant.

## Map Unit Description (Brief, Generated)

Greenville County, South Carolina

[Minor map unit components are excluded from this report]

**Map unit:** CeB - Cecil sandy loam, 2 to 6 percent slopes

**Component:** Cecil (95%)

*The Cecil component makes up 95 percent of the map unit. Slopes are 2 to 6 percent. This component is on broad and narrow ridges and sideslopes adjacent to drainageways in the piedmont. The parent material consists of residuum weathered from granite, gneiss, or schist. Depth to a root restrictive layer is greater than 60 inches. The natural drainage class is well drained. Water movement in the most restrictive layer is moderately high. Available water to a depth of 60 inches is moderate. Shrink-swell potential is low. This soil is not flooded. It is not ponded. There is no zone of water saturation within a depth of 72 inches. Organic matter content in the surface horizon is about 1 percent. Nonirrigated land capability classification is 2e. This soil does not meet hydric criteria.*

**Map unit:** CeC - Cecil sandy loam, 6 to 10 percent slopes

**Component:** Cecil (88%)

*The Cecil component makes up 88 percent of the map unit. Slopes are 6 to 10 percent. This component is on interfluves on southern piedmonts. The parent material consists of residuum weathered from granite and/or residuum weathered from gneiss. Depth to a root restrictive layer is greater than 60 inches. The natural drainage class is well drained. Water movement in the most restrictive layer is moderately high. Available water to a depth of 60 inches is moderate. Shrink-swell potential is low. This soil is not flooded. It is not ponded. There is no zone of water saturation within a depth of 72 inches. Organic matter content in the surface horizon is about 1 percent. Nonirrigated land capability classification is 3e. This soil does not meet hydric criteria.*

**Map unit:** CeD - Cecil sandy loam, 10 to 15 percent slopes

**Component:** Cecil (100%)

*The Cecil component makes up 100 percent of the map unit. Slopes are 10 to 15 percent. This component is on hillslopes on piedmonts. The parent material consists of clayey residuum weathered from granite and gneiss. Depth to a root restrictive layer is greater than 60 inches. The natural drainage class is well drained. Water movement in the most restrictive layer is moderately high. Available water to a depth of 60 inches is moderate. Shrink-swell potential is low. This soil is not flooded. It is not ponded. There is no zone of water saturation within a depth of 72 inches. Organic matter content in the surface horizon is about 1 percent. Nonirrigated land capability classification is 4e. This soil does not meet hydric criteria.*

**Map unit:** PcE - Pacolet sandy loam, 15 to 25 percent slopes

**Component:** Pacolet (100%)

*The Pacolet component makes up 100 percent of the map unit. Slopes are 15 to 25 percent. This component is on hillslopes on piedmonts. The parent material consists of clayey residuum weathered from granite and gneiss. Depth to a root restrictive layer is greater than 60 inches. The natural drainage class is well drained. Water movement in the most restrictive layer is moderately high. Available water to a depth of 60 inches is low. Shrink-swell potential is low. This soil is not flooded. It is not ponded. There is no zone of water saturation within a depth of 72 inches. Organic matter content in the surface horizon is about 1 percent. Nonirrigated land capability classification is 6e. This soil does not meet hydric criteria.*

Greenville County, South Carolina

[Minor map unit components are excluded from this report]

**Map unit:** PdD2 - Pacolet clay loam, 10 to 15 percent slopes, eroded

**Component:** Pacolet (100%)

*The Pacolet component makes up 100 percent of the map unit. Slopes are 10 to 15 percent. This component is on hillslopes on piedmonts. The parent material consists of clayey residuum weathered from granite and gneiss. Depth to a root restrictive layer is greater than 60 inches. The natural drainage class is well drained. Water movement in the most restrictive layer is moderately high. Available water to a depth of 60 inches is low. Shrink-swell potential is low. This soil is not flooded. It is not ponded. There is no zone of water saturation within a depth of 72 inches. Organic matter content in the surface horizon is about 1 percent. Nonirrigated land capability classification is 6e. This soil does not meet hydric criteria.*

**Map unit:** PdE2 - Pacolet clay loam, 15 to 25 percent slopes, eroded

**Component:** Pacolet (100%)

*The Pacolet component makes up 100 percent of the map unit. Slopes are 15 to 25 percent. This component is on hillslopes on piedmonts. The parent material consists of clayey residuum weathered from granite and gneiss. Depth to a root restrictive layer is greater than 60 inches. The natural drainage class is well drained. Water movement in the most restrictive layer is moderately high. Available water to a depth of 60 inches is low. Shrink-swell potential is low. This soil is not flooded. It is not ponded. There is no zone of water saturation within a depth of 72 inches. Organic matter content in the surface horizon is about 1 percent. Nonirrigated land capability classification is 7e. This soil does not meet hydric criteria.*